

## Bulletin Updates

Dear Skwo:wech Families,

It was lovely to see so many families join us for our production of 'Snowflake Delights.' Thank you so much for your support of our winter concert and also your generous support of our student leadership group and their efforts to support Purpose society with your kind donations over the past ten days! We had so many reasons to feel proud of our school community this week. Many of our students have their fingers crossed that our weather reporters had it right and that we might see a glimmer of snow on December 23rd!

with gratitude,

Kathleen



### Report Cards on MyEducation BC Family Portal

- Report Cards will have been published to [MyEducation BC](#) on Thursday, December 14
- For information about logging on to MyEdBC and resetting forgotten passwords, please visit our [MyEducation BC Family Portal resource](#) on our website

### Skwo:wech PAC Bake Sale – Thursday, December 21

- 8:15am-8:45am (or while quantities last!)
- Bake sale will be held at the Courtyard

### Wear Red and Green Day – Friday, December 22

### Winter Break – December 25, 2023, to January 5, 2024

- School closed

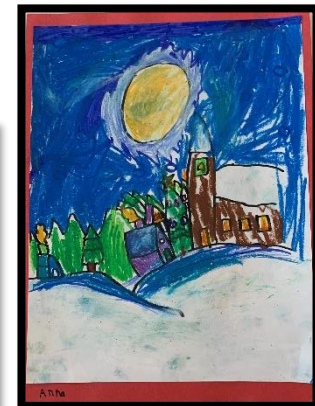
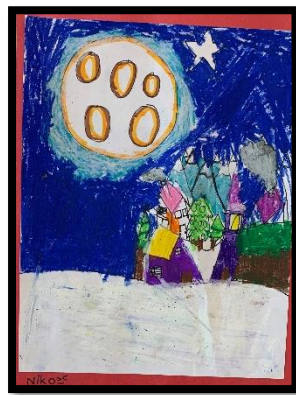




Family reading  
day!







Division 13  
Mrs.  
Kamagianis





The poster is decorated with several gingerbread cookies of various shapes, including stars and snowflakes, some with intricate white icing patterns. Green pine branches with needles are also visible, particularly on the left side. The entire poster is framed by a dark green border.

SKWO:WECH PAC

# HOLIDAY BAKE SALE



**THURSDAY DEC 21**  
**8:15 - 8:45 AM**  
(OR WHILE QUANTITIES LAST)

**\$2 EACH**

CASH ONLY.

LIMIT 2 ITEMS PER PERSON.  
(PLEASE LINE UP AGAIN IF YOU  
WANT MORE THAN 2 ITEMS)  
ALL PROCEEDS GO TO THE PAC.

**VOLUNTEERS NEEDED TO BAKE AND SELL  
ITEMS! SCAN THE QR CODE TO SIGN UP.**



# DISCOVER



New  
Westminster  
Schools

## When

Tuesday, January 9, 2024

## Where

New Westminster  
Secondary School

## Time

5:30 p.m. to 8:30 p.m.



"Discover our fantastic Programs of Choice, explore course selection options, and more!"

# Event Schedule

TIME	EVENT	LOCATION		
5:30 p.m. – 8:30 p.m.	Programs of Choice and Featured Curricular Area Booths	Grand Commons		
5:30 p.m. – 8:30 p.m.	District Book Fair	Library Learning Commons		
6 p.m. to 6:45 p.m.	Specific Programs of Choice and Course Programming Sessions	French Immersion (EFI and LFI) <b>Room: 3034–3036</b>	Careers and Apprenticeship Programs (Grades 9–12) <b>Room: 3035–3037</b> International Program and Homestay Opportunities <b>Room: 3024–3026</b>	Grade 9 Course Programming Session (current Grade 8 students and families) <b>Room: Theatre</b>
6:45 p.m. to 7:30 p.m.	Specific Programs of Choice and Course Programming Sessions	Montessori <b>Room: 3034–3036</b>	Grade 10 Course Programming Session (current Grade 9 students and families) <b>Room: 3035–3037</b>	International Baccalaureate Program (current Grade 10 students and families) <b>Room: Theatre</b>
7:30 p.m. to 8:15 p.m.	Specific Programs of Choice and Course Programming Sessions	Home Learners Program <b>Room: 3034–3036</b>	Grade 11 Course Programming Session (current Grade 10 students and families) <b>Room: 3035–3037</b>	Grade 12 Course Programming Session (current Grade 11 students and families) <b>Room: Theatre</b>

**\*\* All live scheduled sessions will be recorded and the videos uploaded to the New Westminster School District website (<https://newwestschools.ca/>)\*\***



New  
Westminster  
Schools





NWSS MUSICAL THEATRE PRESENTS

# Annie JR.

BOOK BY  
THOMAS MEEHAN

MUSIC BY  
CHARLES STROUSE

LYRICS BY  
MARTIN CHARNIN

**JANUARY 17 & 19, 2024**  
**NWSS THEATRE @ 7PM**

**TICKETS \$10 IN ADVANCE**  
(LIMITED CASH TICKETS AVAILABLE AT THE DOOR)



FOR TICKETS. VISIT [SCHOOLCASHONLINE](https://www.schoolcashonline.com)

ANNIE JR. is presented through special arrangement with Music Theatre International (MTI).  
All authorized performance materials are also supplied by MTI. [www.mtishows.com](https://www.mtishows.com)





NWSS MUSICAL THEATRE PRESENTS

Disney's

# HIGH SCHOOL MUSICAL

ONE ACT EDITION



JANUARY 18 & 20, 2024

NWSS THEATRE @ 7PM

FOR TICKETS, VISIT [SCHOOLCASHONLINE](https://www.schoolcashonline.com)

**TICKETS \$10 IN ADVANCE**

(LIMITED CASH TICKETS AVAILABLE AT THE DOOR)

HIGH SCHOOL MUSICAL JR. is presented through special arrangement with Music Theatre International (MTI).  
All authorized performance materials are also supplied by MTI. [www.mtishows.com](http://www.mtishows.com)



## **2024-2025 Registration**

It's time to register new students for the 2024-2025 school year! Please read the following information carefully.

**NOTE: You only need to register your child if they are not already attending school in the district. You can safely ignore this message if your child is a student in a district school or if they are transitioning between elementary, middle, or high school.**

New registrations for the 2024-2025 school year will open on **November 6, 2024** and close on **January 26, 2024**. As long as you register before **January 26, 2024**, the day you register will not affect your chances of getting into your catchment school.

1. Although we do our best to place new students at their preferred schools, it is regrettably not always possible. Our district has significant capacity challenges because of limited space in schools and a growing student population.
2. If the number of requests for a catchment exceeds the number of available spots, the district reserves the right to use a lottery system to determine placements.
3. The district will confirm all enrollment requests by the end of **March 2024**.

For more information, [learn more about capacity status at our schools](#).

### **How to Register a New Student as a Parent or Legal Guardian**

1. Book a 10-minute appointment with our Registration Team.
2. If you need a translator for your registration appointment, please let us know in advance and we will do our best to accommodate your request.
3. [BOOK YOUR APPOINTMENT ONLINE](#)



**NOTE: We do not accept bookings before November 6. Please ensure you choose appointments on days and times from November 6, 2023 until January 26, 2024.**

For more information on registration, including the forms and guides, [visit the district website's Registration section](#).

### **What to do on the Day of Your Appointment**

1. Visit our Registration Team at the Welcome Centre located in New Westminster Secondary School (enter through the south side of the building at **820 6th Street, New Westminster**).
2. Bring a completed [registration form](#) and copies of the documents outlined in the [Document Guide for Parents and Caregivers](#). **OR** Bring original versions of the documents outlined in the [Document Guide for Parents and Caregivers](#) and our team will help you print, photocopy and complete the required paperwork.
3. If you do not have the suggested documents outlined in the Document Guide, our team will be happy to speak with you confidentially to find a solution.

### **Key Dates**

1. **November 6** – Registration opens.
2. **January 26, 2024** – Registration closes.
3. Looking for a list of other important registration dates, including Programs of Choice enrollment info? [Download a list of key dates for the 2024-2025 school year](#).

We look forward to connecting with your family.

The New Westminster Schools team

We are always excited to welcome new families to the District. Here are the things you need to know to ensure your student is enrolled with the best placement to support their needs.

### Key dates for regular registration:

	In-catchment applications	Transfer requests & Out-of-district applications
<b>Regular registration opens</b>	November 6, 2023	February 5, 2024
<b>Regular registration closes</b>	January 26, 2024	February 23, 2024
<b>Placement offers</b>	March 29, 2024	June 14, 2024

Please note: our District is facing significant capacity challenges, due to growing enrollment. Decisions about the 2024–25 school year are based on enrollment demands identified within the regular registration window. Enrollment applications received outside of this window will be placed within the district but may not be possible at the catchment or preferred school requested, as some schools may be deemed as being at full capacity at certain grades, or in some limited cases, for the full school. All placements follow the rules outlined in [Administrative Procedure 300](#).

Questions can be sent to: [registrations@sd40.bc.ca](mailto:registrations@sd40.bc.ca)

### How to enrol:

Our Central Registration team works out of the Welcome Centre (south side of New Westminster Secondary School, via the external entrance). Information on documents required, process, how to book an appointment and more can be found on our website: <https://newwestschools.ca/our-schools/registration/registration-information-forms/>

### Programs of Choice:

Applications for our Programs of Choice are accepted from Monday January 8<sup>th</sup> to Friday February 2<sup>nd</sup>, via links that will be posted on the District website. Parent information sessions are hosted online in early January. **Students applying for a Program of Choice must first be enrolled at their regular catchment school, following the above process.**

Program	Grade of intake	Location(s)
Early French Immersion	Kindergarten or Grade 1	Herbert Spencer, Qayqayt and Lord Tweedsmuir elementary schools
Late French Immersion	Grade 6	Glenbrook Middle
French Immersion	Grade 9	New Westminster Secondary
Montessori	Kindergarten or Grade 1	Skwo:wech and Connaught Heights
Home Learners Program	Kindergarten to Grade 8	Hume Park Learning Centre

Questions can be sent to: [programsofchoice@sd40.bc.ca](mailto:programsofchoice@sd40.bc.ca)

All forms, Administrative Procedures, and information about capacity status can be found on our website.

[NewWestSchools.ca](https://NewWestSchools.ca)



## **Fuel Up! School Lunch Program**

- December and January menu are available online
- Orders must be placed two business days before delivery. For example, for Monday's lunch you must order by Wednesday.
- If your child will be away from school and you did not cancel their lunch in time, please advise the office if you would like to arrange to pick up the lunch or if the school may donate the lunch to another child who might have forgotten their lunch.
- If your child is away from school, you must cancel two days before their hot lunch delivery and email The Lunch Lady at [new.westminster@thelunchlady.ca](mailto:new.westminster@thelunchlady.ca)

<https://newwestschools.ca/programs-services/fuel-up/overview/>

Do you need to connect with your child's teacher?  
Please see contact information below:

- Mrs. Sharp – Div. 1  
[lsharp@sd40.bc.ca](mailto:lsharp@sd40.bc.ca)
- Mrs. Gibson – Div. 2  
[lgibson@sd40.bc.ca](mailto:lgibson@sd40.bc.ca)
- Mrs. Bhatti – Div. 3  
[sbhatti@sd40.bc.ca](mailto:sbhatti@sd40.bc.ca)
- Mr. Stevens – Div. 4  
[mastevens@sd40.bc.ca](mailto:mastevens@sd40.bc.ca)
- Ms. Hikida – Div. 5MO  
[khikida@sd40.bc.ca](mailto:khikida@sd40.bc.ca)
- Mr. Bamford – Div. 6  
[rbamford@sd40.bc.ca](mailto:rbamford@sd40.bc.ca)
- Mr. Wong – Div. 7MO  
[ddwong@sd40.bc.ca](mailto:ddwong@sd40.bc.ca)

- Mrs. MacLeod – Div. 8  
[emacleod@sd40.bc.ca](mailto:emacleod@sd40.bc.ca)
- Ms. Lee – Div. 9  
[mlee@sd40.bc.ca](mailto:mlee@sd40.bc.ca)
- Ms. Lacey – Div. 10  
[slacey@sd40.bc.ca](mailto:slacey@sd40.bc.ca)
- Mrs. Toufic – Div. 11MO  
[htoufic@sd40.bc.ca](mailto:htoufic@sd40.bc.ca)
- Ms. Tse – Div. 12  
[jtse@sd40.bc.ca](mailto:jtse@sd40.bc.ca)
- Mrs. Kamagianis – Div. 13  
[dKamagianis@sd40.bc.ca](mailto:dKamagianis@sd40.bc.ca)
- Ms. Gong – Div. 14  
[cgong@sd40.bc.ca](mailto:cgong@sd40.bc.ca)

- Ms. Thompson/Ms. Pelka – Div. 15  
[jthompson@sd40.bc.ca](mailto:jthompson@sd40.bc.ca) /  
[kpelka@sd40.bc.ca](mailto:kpelka@sd40.bc.ca)
- Mrs. Stewart/Mr. Elves – Div. 16  
[astewart@sd40.bc.ca](mailto:astewart@sd40.bc.ca) /  
[deleves@sd40.bc.ca](mailto:deleves@sd40.bc.ca)
- Ms. Stephanie – Div. 17MO  
[skwok@sd40.bc.ca](mailto:skwok@sd40.bc.ca)
- Mrs. Whyte – Div. 18  
[swhyte@sd40.bc.ca](mailto:swhyte@sd40.bc.ca)
- Ms. Ballantyne – Div. 19  
[vballantyne@sd40.bc.ca](mailto:vballantyne@sd40.bc.ca)
- Mrs. Simpson – Div. 20  
[jsimpson@sd40.bc.ca](mailto:jsimpson@sd40.bc.ca)
- Ms. Peng – Div. 21MO  
[bpeng@sd40.bc.ca](mailto:bpeng@sd40.bc.ca)