

Skwo:wech Stream



March 14, 2025

Important Dates

Report Cards – Friday, Mar 14

- Report cards have been printed and sent home today
- Also online in MyEdBC parent portal

School Open – Monday, March 31

Updates

This term in the library

- **Check out some of what we did in the library this term**
- <https://sway.cloud.microsoft/HZoNm3jRyTC4BnpH?ref=Link>

Parking Lot at the end of Archer Street

- Please help us by not parking at the end of Archer Street where it becomes the school parking lot entrance or parking in the staff lot
- This space is to be kept free of vehicles for **pedestrian safety and access**

FuelUp! School Lunch Program

- **April menu** is now open for families to order
- Orders must be submitted at least 2 business days in advance. Info: <https://newwestschools.ca/programs-services/fuel-up/overview/>
- If you require help with ordering, subsidies, or feedback, please email Fuelup@sd40.bc.ca

Library Open Mondays for Families 3:00 – 3:30

- Every Monday afternoon in the library at 3:00-3:30pm, we have an open invitation to all families to come hang out, read, craft or play board games with Ms. Su, Ms. Sigur, Ms. Ryan, Ms. Hayashi, and Ms. Vahra (Librarian, ELL, and Resource Teachers)

Queens Park Preschool “Reach for the Stars” Silent Auction – Saturday, April 5

- <https://www.eventbrite.com/e/reach-for-the-stars-qpps-silent-auction-tickets-1250345309479?aff=oddtcreator>

Student Learning Survey 2024/2025

The Provincial Student Learning Survey gathers information from parents/guardians/caregivers, teachers, and students on topics related to school environment, safety, and achievement.

The information is used for planning in individual schools and provides a district and provincial perspective. The Student Learning Survey will be administered to students in grades 4, 7, 10, 11, 12, their parents/guardians/caregivers, and all school staff.

We encourage parents/guardians/caregivers to participate in this survey, as the results are important in identifying and celebrating current strengths, as well as determining where the school needs to focus improvement.

The survey can be completed electronically and can be accessed on the Internet at <https://www.awinfosys.com/SurveyFull1/central/main/access.asp>

Any computer or mobile device with an Internet connection can be used, and access to the esurvey is simple and secure. On the login page, click on the Parents icon, and then select the school district and school name where your child attends school.



Community School Programs at Skwo:wech!

The Power of Drawing (Grades 1 - 5)

Young Rembrandts teaches drawing, the fundamental skill of all visual arts to children. Your child will develop drawing and art skills, expand their creativity, imagination and confidence.

ADST Room

Mondays, 3:00 - 4:15pm

Date: May 5 - Jun 16 (6 sessions)

No class on May 19

Registration Fee: \$100.50

To register, please visit: www.youngrembrandts.com/metrovancover/

Sports of all Sorts (Grades 1 - 2)

Sing, dance, and act, and expand your fundamental musical theatre skills. Includes basic singing, dancing, acting, and games. Increase your artistic skills, and end in a collaborative mini performance.

Gym

Tuesdays, 3:00 - 4:30pm

Date: Apr 22 - May 27 (6 sessions)

Registration Fee: \$67.50

To register, please visit:

[Skwo:wech Sports of all Sorts](#)

Professor Puffin (Grades 1-4)

Professor Puffin's Challenge Club is an afterschool enrichment program that offers a fun, educational and engaging experience for children. The program uses a variety of activities to review subjects covered in the BC school curriculum (Science, art, nature, English, etc.) while mixing in entertaining topics to spark children's interest.

Library

Thursdays, 3:00 - 4:15pm

Dates: May 8 - Jun 12

Registration Fee: \$100.50

To register, please visit: <https://professorpuffin.ca/>

New Westminster Soccer Club (Grades 3 - 5)

NWSC's weekly training sessions follow a progressive curriculum with the primary focus being on having fun through a games-based approach.

Gym

Mondays, 3:00 - 4:00pm

Date: May 5 - Jun 16

No class May 19

Registration Fee: \$40

To register, please visit: <https://newwestsc.ca/>

Registration Code: SWSPR25 - must use code to register

For questions, contact Nel Grond at clubregistrar.nwsc@gmail.com

Have questions?

Contact Community Schools

Phone: 604-517-6291

E-mail: communityschools@sd40.bc.ca

FREE TO ATTEND!

WE WILL GRACIOUSLY BE ACCEPTING CASH DONATIONS OF ANY AMOUNT FOR THE NEIGHBOURHOOD HOUSE



GREEN HEARTS, HELPING HANDS

All ages
welcome but
best suited
for 8 and
under

**A FAMILY-FRIENDLY CLIMATE EVENT & FUNDRAISER
FOR THE NEW WEST NEIGHBOURHOOD HOUSE**

MARCH 15 | **ST. BARNABAS**
10 AM – 12 PM | **1010 FIFTH AVENUE**



Performance by musical guests, The Well Worn Trail

Storytelling by local mom, Rebekah Adams-Brush

Art projects with Dr. Recycle

Children's activities with Gardens4Kids



Questions?
Please reach out to hello@tashahenderson.com

KERNELS POPCORN TREAT DAY

WEDNESDAY APRIL 9
AFTER SCHOOL IN THE COURTYARD



Available flavours:
Butter salt, caramel,
white cheddar, salt & vinegar

All proceeds will go to the Skwo:wech PAC

SKWO:WECH BIKE BUS

JOIN THE WEEKLY BIKE BUS – STARTING IN APRIL!

We're excited to kick off a weekly Bike Bus for students every Friday, starting in April and running until the end of the school year! The Bike Bus is a fun and active way to get to school, promoting exercise, community, and safe riding habits. 🚲

HOW IT WORKS

A group of students and families will ride together along a planned route to school. We encourage parents and guardians to join in the fun by biking, scooting, or walking alongside their children. This is not a drop-off service; your active participation is essential for the safety and enjoyment of everyone involved. You can join at any point along the route that's convenient for you. Your child can ride on the road or the sidewalk.

We can't wait to see you on two (or more) wheels! Let's make Fridays a day to celebrate movement, fresh air, and community spirit.

- 📍 Start Location: temeseŵtx™ Aquatic and Community Centre (by the sculpture)
- 🕒 Departure Time: 8:20am on Fridays (arrive by 8:15am so we can leave on time)
- 🕒 Arrival at Skwo:wech: 8:30am (lots of time to lock up bikes and line up before bell)
- 📍 Route Map: <https://ridewithgps.com/routes/49952538>

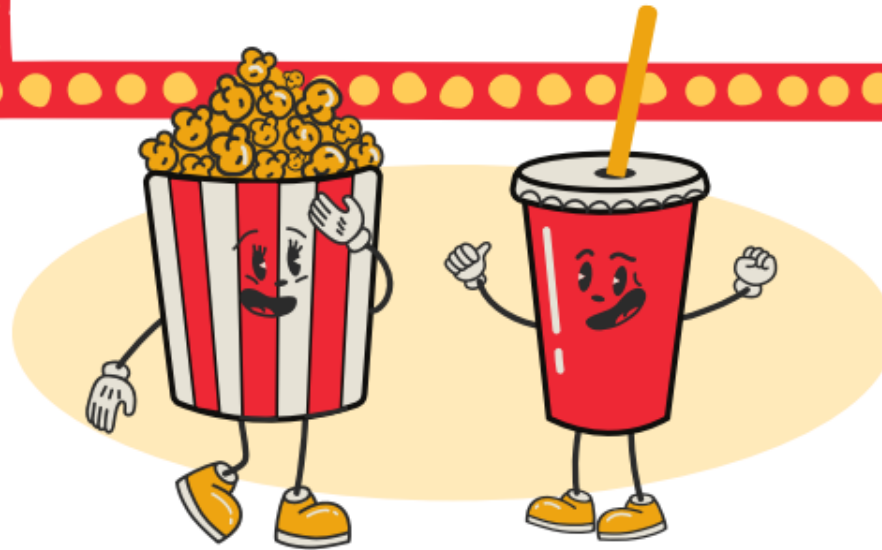
**FOR QUESTIONS
OR TO GET
INVOLVED:**

[WWW.TINYURL.COM/
SKWOWECHBIKEBUS](http://WWW.TINYURL.COM/SKWOWECHBIKEBUS)



SEE YOU ON THE BIKE BUS! 🚲 BROUGHT YOU TO BY THE SKWO:WECH PAC

SKWO:WECH PAC PRESENTS
FAMILY MOVIE NIGHT



FRIDAY APRIL 11 | 5:30 PM | SKWO:WECH GYM

MOANA 2

FREE ADMISSION

DOORS OPEN AT 5PM

PAID CONCESSION (CASH & CARD). PRE-ORDER PIZZA ON MUNCHALUNCH.

FEEL FREE TO BRING A PILLOW, BLANKET, STUFFIE, AND WEAR YOUR JAMMIES!
ALL CHILDREN MUST HAVE PARENT SUPERVISION.

SPACE IS LIMITED. BOOK YOUR SPOT AT WWW.TINYURL.COM/SKWOWECHMOVIE

WE NEED PARENT VOLUNTEERS! EMAIL US AT SKWOWEHPAC@GMAIL.COM